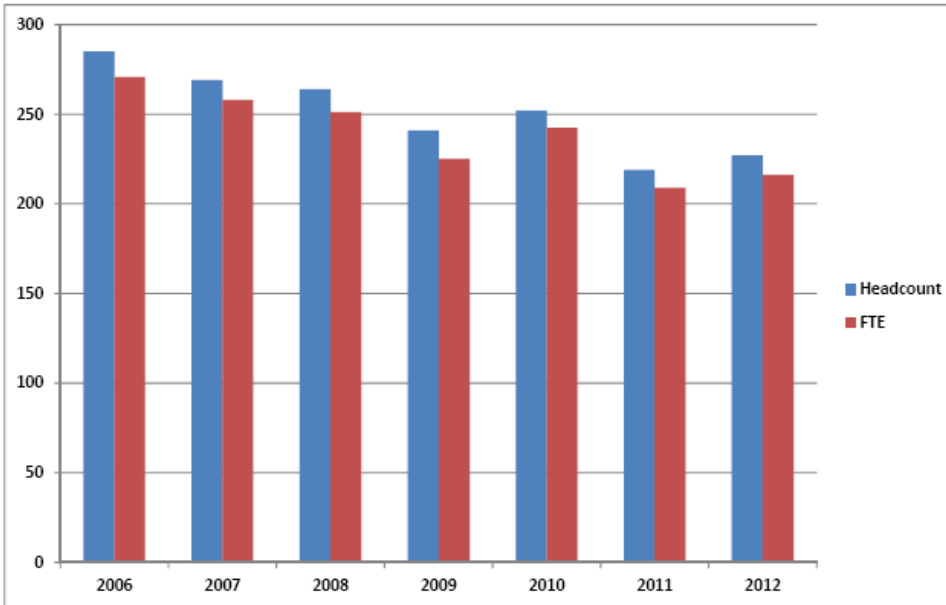
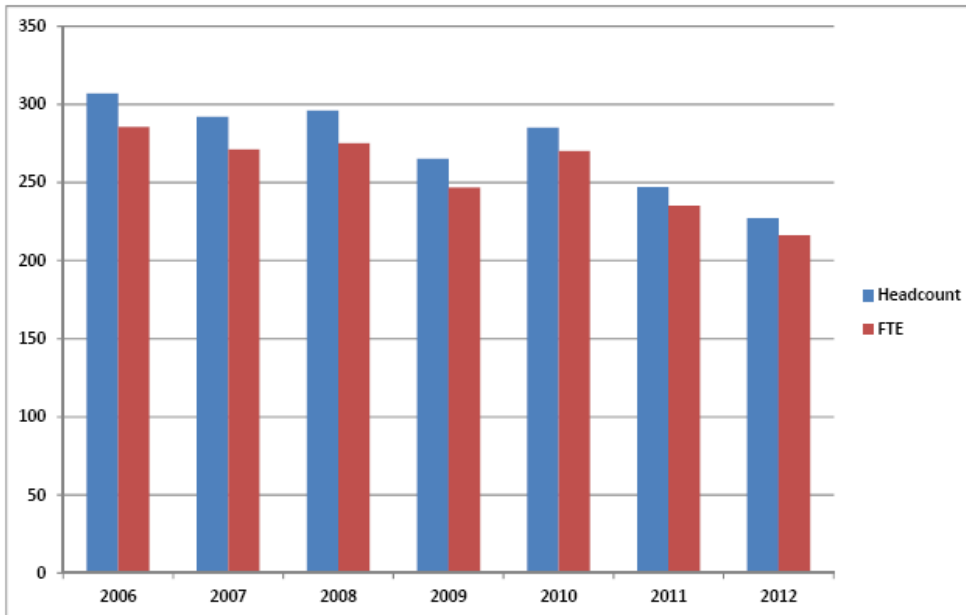


Trinity Bible College
Headcount / Full-Time Equivalency (FTE) -- without D.E.
Fall Semesters, 2006 - 2012



Fall	Headcount	FTE
2006	285	270.75
2007	269	257.83
2008	264	251.14
2009	241	225.16
2010	252	242.25
2011	219	208.84
2012	227	216.17

Trinity Bible College
Headcount / Full-Time Equivalency (FTE) -- including D.E.
Fall Semesters, 2006 - 2012



Fall	Headcount	FTE
2006	307	285.5
2007	292	271
2008	296	275
2009	265	246.7
2010	285	270
2011	247	234.9
2012	227	216.17